

Alchemy Web Server

Access Alchemy Databases from Web Browsers

Alchemy Web Server enables Web browser-based query, retrieval, and viewing of files stored in Alchemy databases. The functionality through the browser is similar to that found in the Alchemy Search Windows client. Alchemy Web Server installs on a Microsoft Windows NT server running Internet Information Server (IIS) and Active Server Pages (ASP).

Applications for Alchemy Web Server

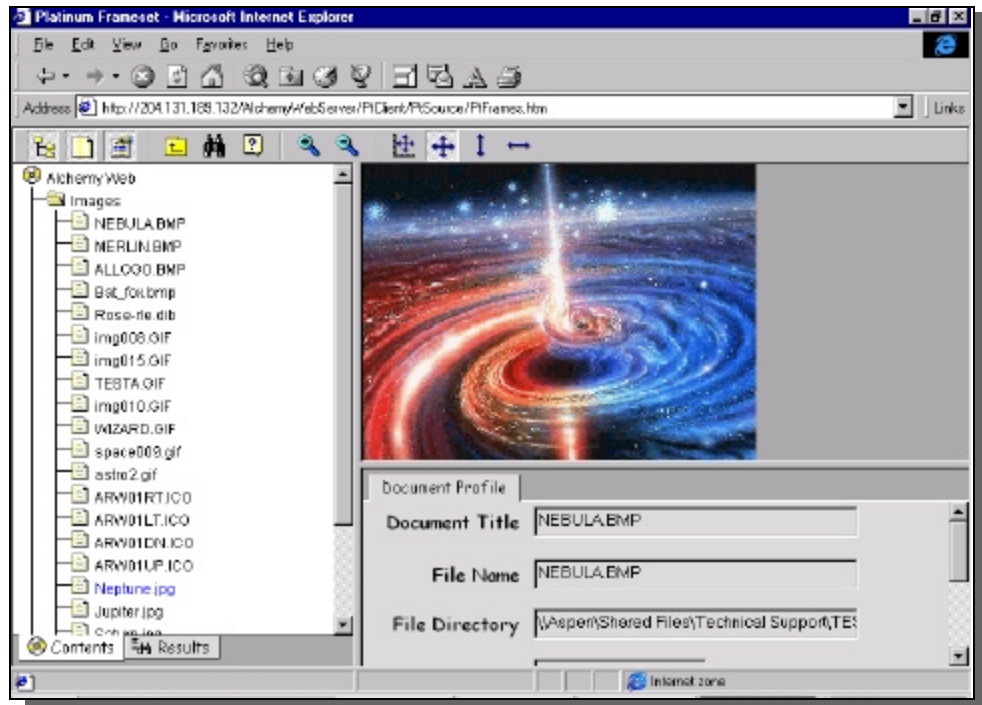
Every day as a normal part of their business processes, businesses and government offices create files and documents that they want to share using an Intranet or the Internet. The large majority of these files cannot efficiently be stored and retrieved in a relational database. Examples abound: scanned images (TIFFs), computer report files (COLD), AutoCAD drawings, Adobe Acrobat PDF files, text files, Office 97 documents and other binary files.

Alchemy uses a very efficient object database architecture to integrate full-text indexes and metadata. The integrated database was developed by IMR and has been proven to work in thousands of applications. Each database is capable of storing millions of documents and data on low-cost, PC attached storage devices such as CD-ROMs.

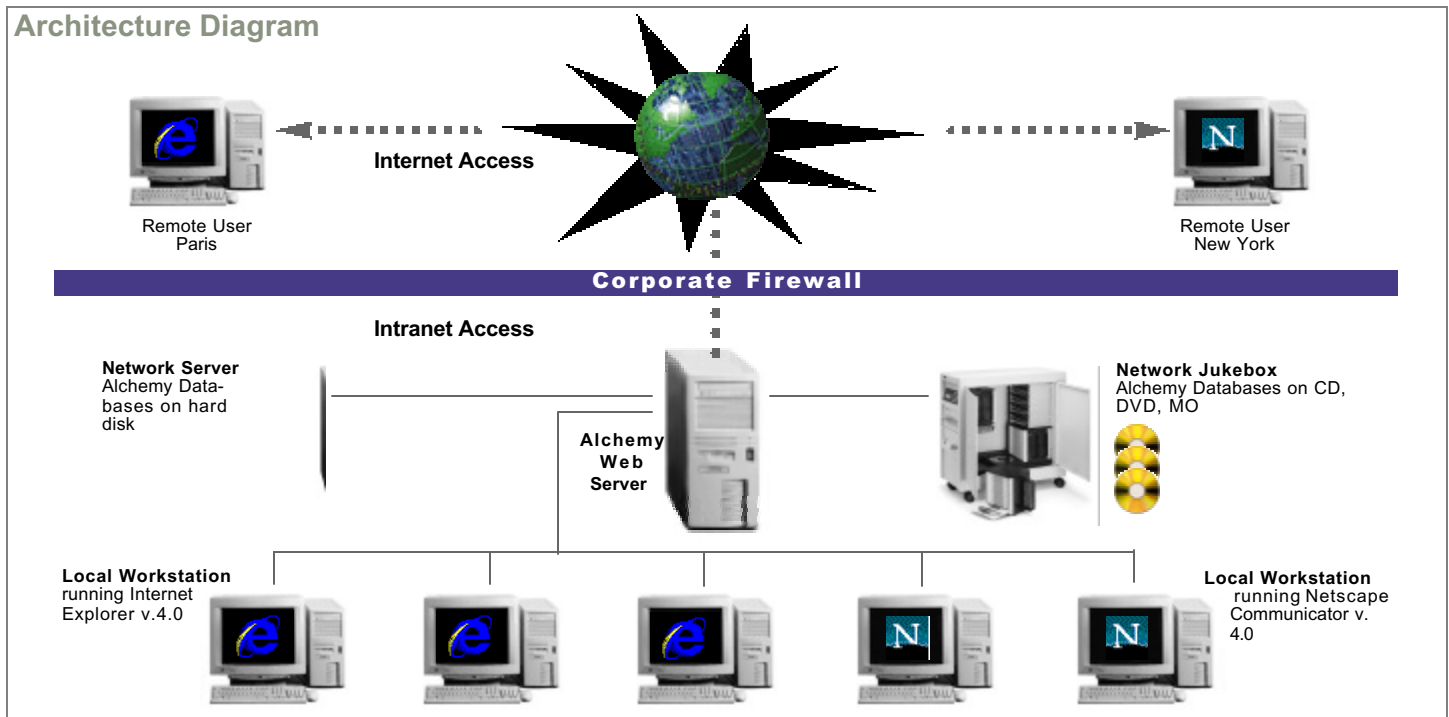
Alchemy Web Server leverages this efficient and affordable database architecture to deliver files and data to a Web browser. As a result, here are some examples of possible applications:

- Customer access to archived documents such as cancelled checks, eliminating the need for intervention or support from customer service representatives.
- A customer service representative can connect to and research vast archives of customer billing records.
- A service bureau can offer its clients an off-site data vault service while still providing the client with access to its data via the Web.
- A city or county government office can scan and place historical land and title records online, eliminating the need for an employee to service every title search request.
- The globally dispersed sales force of a multi-national corporation can access and research sales and marketing files created in different applications.
- Clients of a construction engineering firm can browse and view the entire history of a design project, simply by connecting to the Alchemy Web Server located at the firm.

**Access
Information
Around The
Office
And Around The
World!**



Architecture Diagram



Architecture

Alchemy Web Server has two main components: the server side and the client side. The Server component is installed on a Microsoft Windows NT server running both Internet Information Server (IIS) and Active Server Pages (ASP). The Server component can request data from any Alchemy database accessible to that NT Server. When an Internet Explorer or Communicator browser connects to the Alchemy Web Server through HTTP, the Client component is downloaded from the Server to the browser, and serves as the graphical user interface to the Server. The Client sends requests (list, query, display) to the Server, which connects to the appropriate Alchemy database, converts the request results into HTML and exports the results back to the Client.

Features of Alchemy Web

- Browse, query and view Alchemy databases
- Browser interface closely resembles the Alchemy Windows client
- Services full-text and profile card queries
- Converts documents to HTML on the fly
- Displays HTML version of document in a viewer
- Displays data in profile card or rows and column views
- Compatible with Alchemy databases versions 3.0 and later
- Compatible with MS Windows NT 4.0 and Internet Information Server (IIS)
- Compatible with MS Internet Explorer 4.0 and Netscape Communicator v. 4.0
- Uses Microsoft Active Server Page (ASP) technology

Represented by



How Alchemy Web Server Works

1. Start your web browser.
2. Specify the URL to an Alchemy Web Server.
3. View a table of contents list of available Alchemy databases and their contents.
4. Execute a search.
5. View a result list.
6. View a selected document from either the result list or the table of contents browse list.

Hardware and Software Requirements

Server:

- **Operating System** Microsoft Windows NT v4.0 or higher, with Service Pack 3 and NT 4.0 Option Pack.
- **Additional Software** Microsoft Internet Information Server 4.0 and Active Server Pages v. 4.0.
- **Memory** -64 MB RAM.
- **Processor** -200 MHz CPU (Intel[®] only).
- **Free Disk Space** 44 MB free hard disk space to install Alchemy Web Server. For best performance, one quarter of the disk drive should be free.

Client

- **Browser** -Microsoft Internet Explorer 4.0 or Netscape Navigator or Communicator 4.0 or higher.
- **Operating System** -Microsoft Windows 95, 98 or NT 4.0 or higher.
- **Memory** -8 MB RAM minimum (16 MB recommended for Windows 95; 16 MB RAM for Windows NT 4.0).



Service bureaus and electronic publishers are required to purchase a distribution license. Alchemy, DataGrabber, Scan2CD and 2CD are registered trademarks of Information Management Research, Inc. All rights reserved. All other trademarks or registered trademarks are the property of their respective companies. Copyright 1998. Information Management Research, Inc.

IMR Information Management Research, Inc.

6025 So. Quebec St.
Englewood, Colorado 80111 USA
Phone: (303) 689-0022
Fax: (303) 689-0055
Internet: www.imrgold.com
E-mail: sales@imrgold.com

